

## *ColourBrain® X-Side 4.0* – The smart solution for versatile applications.



### Compact inspection for narrow surfaces.

Baumer presents the miniaturized surface inspection.

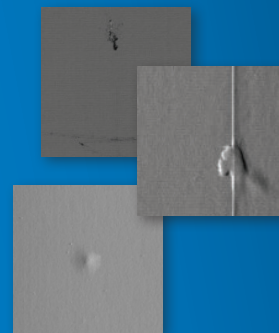
The inspection system *ColourBrain® X-Side 4.0* is a universal application for narrow surfaces. Typical production defects such as bumps or dents are precisely detected and the drilling pattern is monitored for uniformity on the coated and painted narrow sides of furniture components. In combination with the proven Baumer surface and edge systems, a 360° inspection of furniture parts is now possible. Due to the compact and modular design, the system is constructed for the simultaneous inspection of up

to 6 narrow surfaces. It can be used in a variety of areas, such as the inspection of foil joints and grooves in the edge areas of furniture parts, but also for the inspection of baseboards or door frames. *ColourBrain® X-Side 4.0* works independently of decor and structure. With its slim design the system can be quickly integrated into your existing production environment.

### Our defect detection, optimizes your production.

Your benefits at a glance:

- Versatile application for the inspection of narrow surfaces on furniture parts, baseboards and door frames.
- Detects typical production defects and verifies the presence of drill holes.
- Objective detection of small defects, independent of decor and structure.
- Same user interface and data interfaces for combined Baumer systems.
- Classification of defects and allocation in the production process.
- Improve your product quality through immediate process optimization.
- The system is suitable for both series and batch-1 operation.



# Product data *ColourBrain® X-Side 4.0*

Inspection objects	Foil, melamine-coated and lacquered furniture boards, door frames or baseboards
Defect types	Bumps, dents, stains, spots, inclusions, paper crack, board break, loose foil, open film joint, end of roll, corner break-off
Inspection width & product distance	Version 60 mm, Version 100 mm 6 mm ± 1 mm
Dimension of Version 60 mm	L 100 mm x W 180 mm x H 180 mm (plus plug)
Dimension of Version 100 mm	L 100 mm x W 240 mm x H 280 mm (plus plug)
Production speed	0-75 m/min (surface inspection), 0-100 m/min (drill hole inspection)
Material flow types	Series, batch-1, in tracks, panel under foil, endless
Supported conveyor systems	Belt, flat belt, and roller conveyor

## Modular Construction.

- The modular system structure provides the inspection of up to 6 narrow surfaces. The compact design allows fast installation into your production environment.

## Flexible Extension.

- Should your requirements change, thanks to our modular system design, extensions are possible at any time – hardware as well as software side.

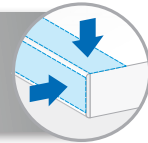
## Miniaturized Surface Inspection.

- The perfect system for many applications. Specially developed for the inspection of narrow surfaces on furniture components as well as for narrow and long components such as baseboards and door frames.

## Intuitive & Ease of Use.

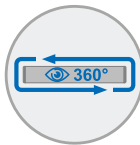
- The user interface provides an intuitive, easy-to-understand overview of complex information, focusing on the essentials for the plant operator.

The innovative inspection unit is specialized in the inspection of narrow surfaces in various applications.



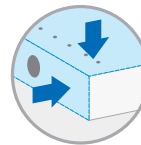
## Holistic process monitoring.

The compact design of the *ColourBrain® X-Side 4.0* enables versatile applications on narrow surfaces. Combined with the analysis tool *Q-Live®*, Baumer networks plants across locations and thus offers a complete overview of all production lines. You get an optimal overview of the current production and the resulting statistical analyses and enable the operator to optimize the process immediately.



### ■ 360° in view

In combination with the Baumer surface system *ColourBrain® Furniture 4.0* and the edge systems *ColourBrain® Edge*, the 360° inspection of furniture parts is now possible.



### ■ Drill pattern check simply integrated

Check the drill patterns on large and narrow surfaces, together with the *ColourBrain® DrillCheck 4.0* – the system with smart 3D technology.

 **Baumer**  
Passion for Sensors

Baumer Inspection GmbH  
Lohnerhofstrasse 6 · DE-78467 Konstanz · Germany  
Phone +49 (0)7531 99 43 0 · Fax +49 (0)7531 99 43 44  
info@baumerinspection.com · www.baumerinspection.com

More information on:  
[www.baumerinspection.com](http://www.baumerinspection.com)



Technical modifications and errors reserved.  
06/20